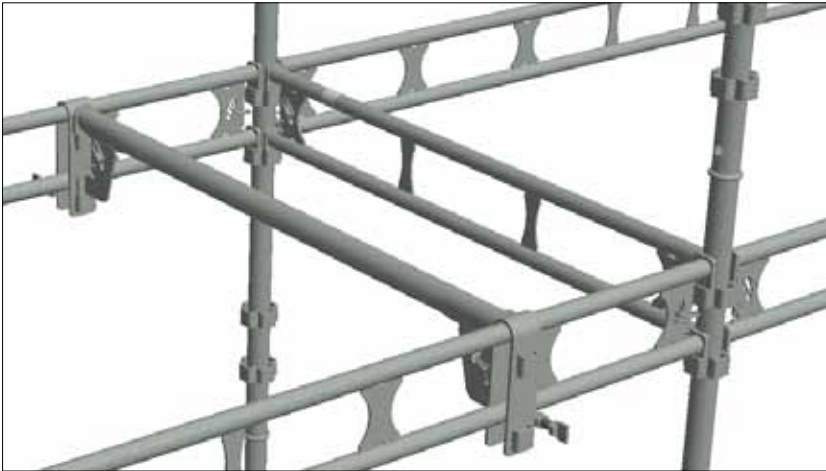


# HAKI Beam riders



**BRS**



**BR 50**



HAKI beam riders increase the versatility of the HAKI Universal system to a significant extent. Using the beam riders, ledgers and transoms can be fitted at right angles to one another anywhere in the scaffolding. For example: next to projecting or recessed sections of façade, around piping and ducting, or where reinforcement is required for a landing platform.

The beam riders are used for fitting ledgers and transoms at right angles to one another in any position. They are available in two designs: BRS for fitting onto LB/LBL ledgers, and BR 50 for fitting onto ERB single tube beams.

The beam riders are made of steel, but can be used for both HAKI Universal galvanized steel and HAKI Universal aluminium structures.

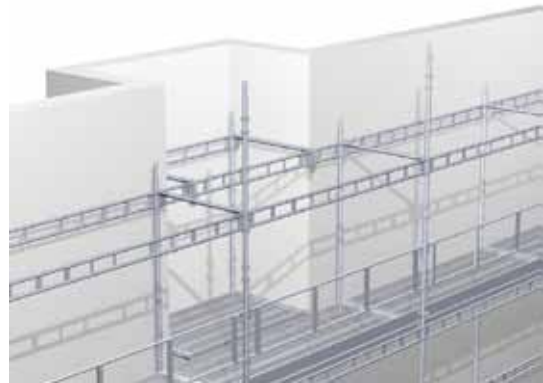
The beam riders are mounted on the ledgers or transoms. Tighten the locking screws by hand or fit 12 mm spring pins so that the beam riders cannot be lifted off unintentionally. Hook a ledger or transom into the pockets of the beam riders and lock it.

Always check the permissible load on the loadbearing ledger or transom.

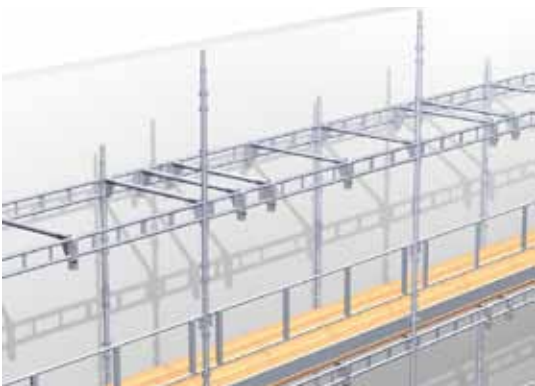
HAKI Beam rider		Art. No.	Weight, kg.
<b>BR 50</b>		7208024	1.2
<b>BRS</b>		7208020	2.0



Next to projecting sections of façade, the inside ledger is fitted onto the transoms with the aid of beam riders.



Next to recessed sections of façade, an extra bay is erected inside the ordinary bay, irrespective of the position of the standards. The transoms are fitted onto the ordinary ledger using beam riders.



Under butt joints in longitudinal decking, extra transoms are fitted using beam riders on the ledgers, irrespective of bay division.



Where transverse decking is subject to high loads, extra ledgers are fitted close to ordinary ledgers as reinforcement using beam riders on the transoms.

Extra transoms can also be fitted where longitudinal decking is subject to high loads.

Furthermore, extra ledgers can be fitted as reinforcement where landing platforms are subject to high loads.



Internal ladder access through decking is easily provided with the aid of beam riders.



Example of solution using beam riders for decking around ducting or similar.

