

# HAKI Universal

HAKI Universal is a modular scaffolding system that can be utilised on applications from the simple to the most complex. For even advanced constructions in building projects, industries, shipyards, offshore installations and refineries.

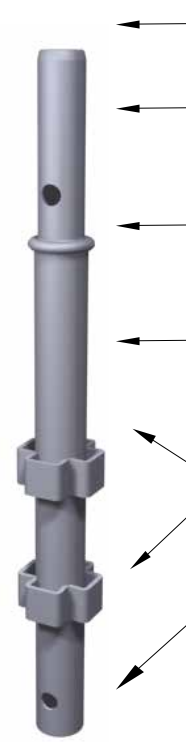
The scaffolding system is particularly adaptable with respect to bay size and load class and is compatible with HAKI Ram and earlier HAKI generations.

Type examined by SP Technical Research Institute of Sweden in accordance with Ordinance AFS 2013:4 and SS-EN 12810-1 - Certificate No.14 55 01 - for load classes 1 - 6 (0.75 - 6.0 kN/m<sup>2</sup>).

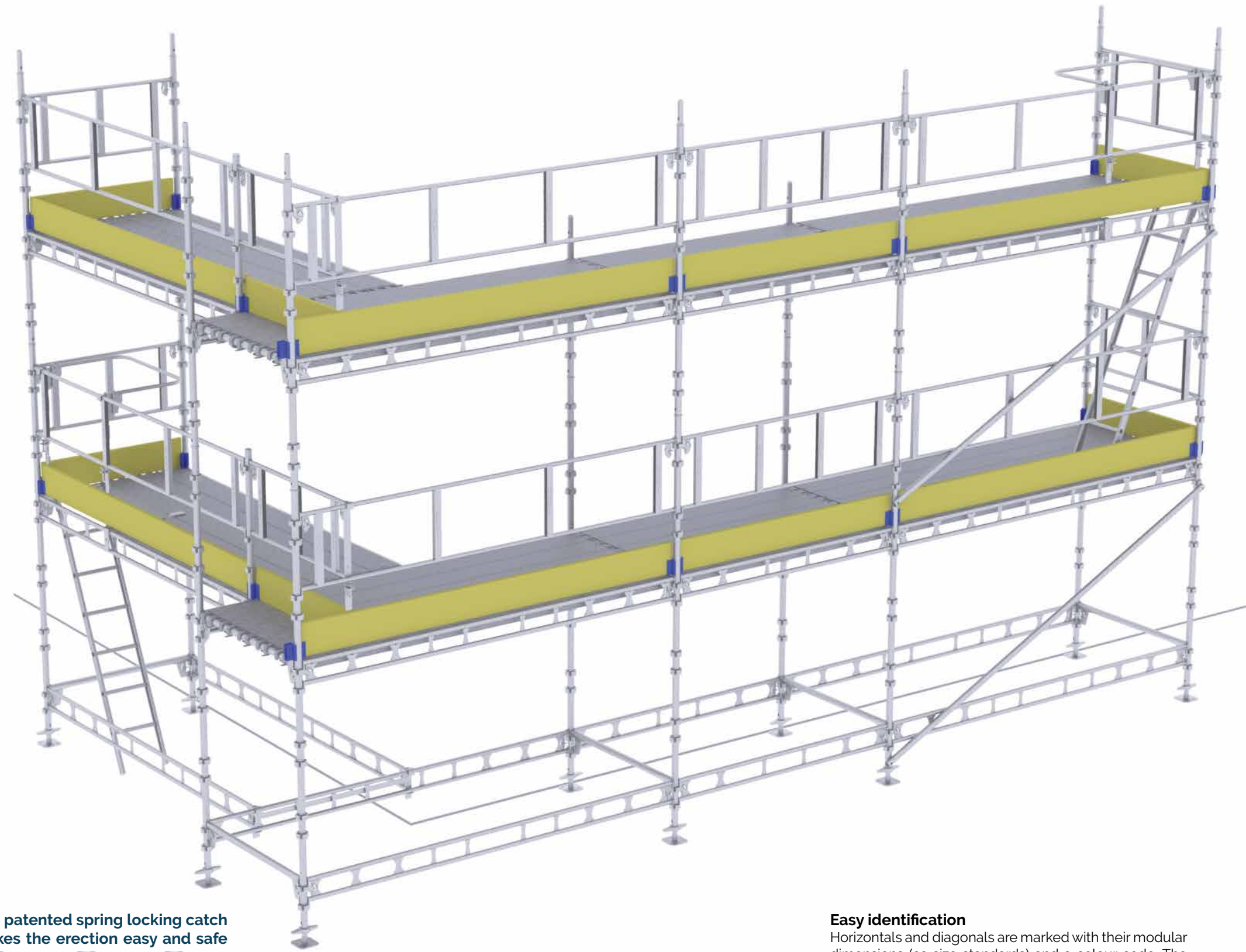
The components range includes brackets, ladders, stairs and suspension devices.

The components can also be used for erection of stair towers, mobile towers, sign towers, stages, stands and other temporary constructions and be included in HAKITEC Weather protection systems.

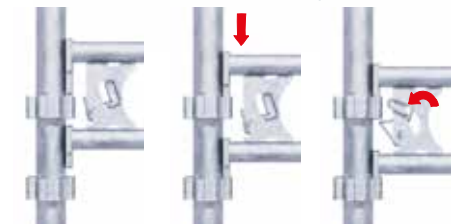
**HAKI standard is designed to meet all current European regulations, directives and standards, and is ideally suited to modern scaffolding methods and production techniques**



- ← The rounded tube end simplifies erection.
- ← Spigot, 38mm diameter and 150mm long, gives a joint with optimum rigidity.
- ← Standard tube and spigot are manufactured as a single unit without welding.
- ← Using modern techniques the end of the tube is converted into a spigot in three steps. It can't be safer.
- ← The wide spacing between groups of pockets, with an outside diameter of just 48 mm, makes it easier to fit diagonals, ties, couplers and other accessories.
- ← Pockets at the same level mean that the connecting beams are also at on level which gives decking flat in every direction. There are no dangerous edges to trip over at corners or at stairways and brackets.
- ← Holes punched in the top and bottom of all standards make it a quick and easy task to make a joint with locking pins for lifting and tensile forces. The permissible tensile load is 20.0 kN.
- ← Symmetrical in two planes and thereby simple to erect and handle.
- ← The standards are compact and can be solid-packed



### The patented spring locking catch makes the erection easy and safe



The spring locking catch is primarily designed for manual locking. The catch can be moved easily with the thumb to a distinctly locked or unlocked position. The spring locking catch makes it possible to erect from distance. There is no risk of any moving parts of the construction jamming as a result of painting, blasting and corrosion.

### Easy identification

Horizontals and diagonals are marked with their modular dimensions (cc size standards) and a colour code. The marking is an excellent means of identification when erecting and handling the scaffolding materials.

564		1550		2500	
700		1655		2550	
770		1964		3050	
1010		2050			
1050		2210			
1250		2357			

 <p><b>Adjustable Base Jack</b> Adjusts to suit application 55-570 mm</p>	 <p><b>Standard</b> Standard joint with spigot Pockets at the same level Tube diameter 48 mm Sizes range from 500-3000 mm</p>	 <p><b>Ledger Beam</b> Tube diameter 34 mm Sizes range from 1050-3050 mm</p>
 <p><b>Single Tube Beam</b> Tube diameter 48 mm Sizes range from 564-3050 mm</p>	 <p><b>Guardrail Frame</b> Tube octagon 28 mm Sizes range from 700-3050 mm</p>	 <p><b>Intermediate Transom</b> Scaffold boards are fully compatible with the system using the intermediate transom for support</p>
 <p><b>Puncheon Unit</b> Create an off node vertical connection anywhere along the beam and add standard</p>	 <p><b>Beam Rider</b> Unique bay sizes can be created with an off node connection anywhere along the beam</p>	 <p><b>Return Transom</b> Can be used to form a return instead of the ledger beam in place of two beam riders</p>
 <p><b>Bracket without spigot</b> Tube diameter 48 mm Width 230 - 400 - 460 - 600 mm</p>	 <p><b>Bracket with spigot</b> Tube diameter 48 mm Width 514 - 700 - 720 mm</p>	 <p><b>Bracket Adjustable</b> Adjustable 460-690 mm 2-3 board bracket gives the option of increasing the width of a scaffold without additional support legs</p>
 <p><b>Steel Plank</b> Up to load class 6 230 mm wide boards</p>	 <p><b>Aluminium Plank</b> Up to load class 6 230 mm wide boards</p>	 <p><b>Locking Pin</b> Locks standards together when used in suspended applications, for crane lifted sections or for weather protection applications</p>
 <p><b>Stair UTV</b> UTV stair and handrail creates a stair tower in place of a ladder Stair and handrail in aluminium or galvanized</p>	 <p><b>Ladder</b> Access ladder with hooks to replace tying</p>	 <p><b>Suspension Devices</b> Various sizes suspension devices available to suit application</p>

# HAKI Applications



## Independent

Load classes 1 - 6  
Bay width 700, 770, 1050,  
1250, 1655 mm  
Decking: Decking unit, steel plank,  
aluminium plank



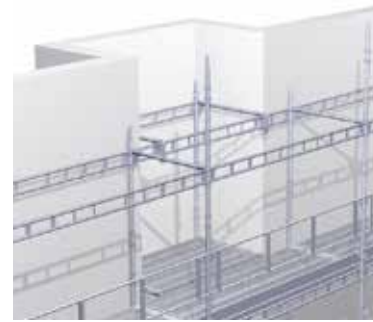
## Crane Lifted

Same standard for all applications, just  
add a locking pin for crane lifted sections,  
suspended or weather protection



## Suspended

Permissible tensile load in  
standards 20.0 kN  
Decking: Decking unit,  
steel plank, aluminium plank



## Beam Riders

Beam riders increase the versatility of the  
system to a significant extent.



## HAKI Stairs

Stair Tower Symmetrical  
Stair UTV  
Public Staircase



## Circular

Safe and simple ways to erect a circular  
scaffold using key components.



**HAKI** – temporary work-places ensure the highest standard in safety whilst increasing productivity

**SAFE** – product development, quality assurance and modern production

**ADAPTABLE** – a few basic components for both scaffolding and weather protection

**PRODUCTIVE** – increase productivity in your daily work

**EXPERT** – training, technical support and project engineered solutions



HAKI AB • SE-289 72 Sibbhult, Sweden • Tel +46 44 494 00 • [info@haki.se](mailto:info@haki.se) • [www.HAKI.com](http://www.HAKI.com)

# HAKI Universal -just hook on



© HAKI EN 2022.06 P200002 Graphic design Ekestad Design AB

